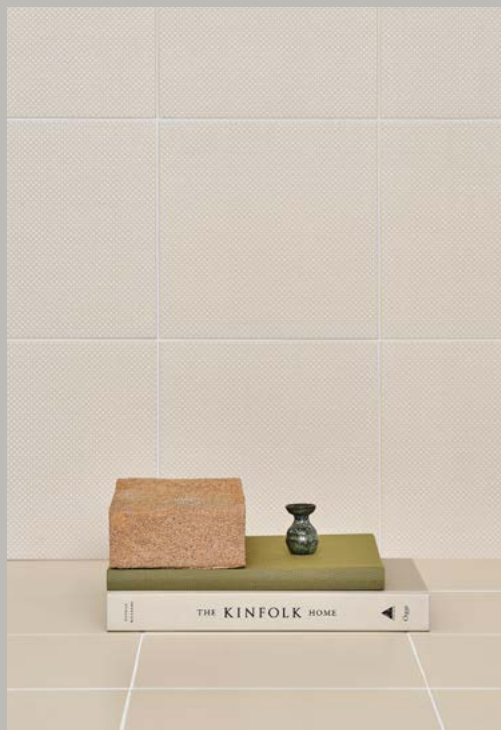


# Pin

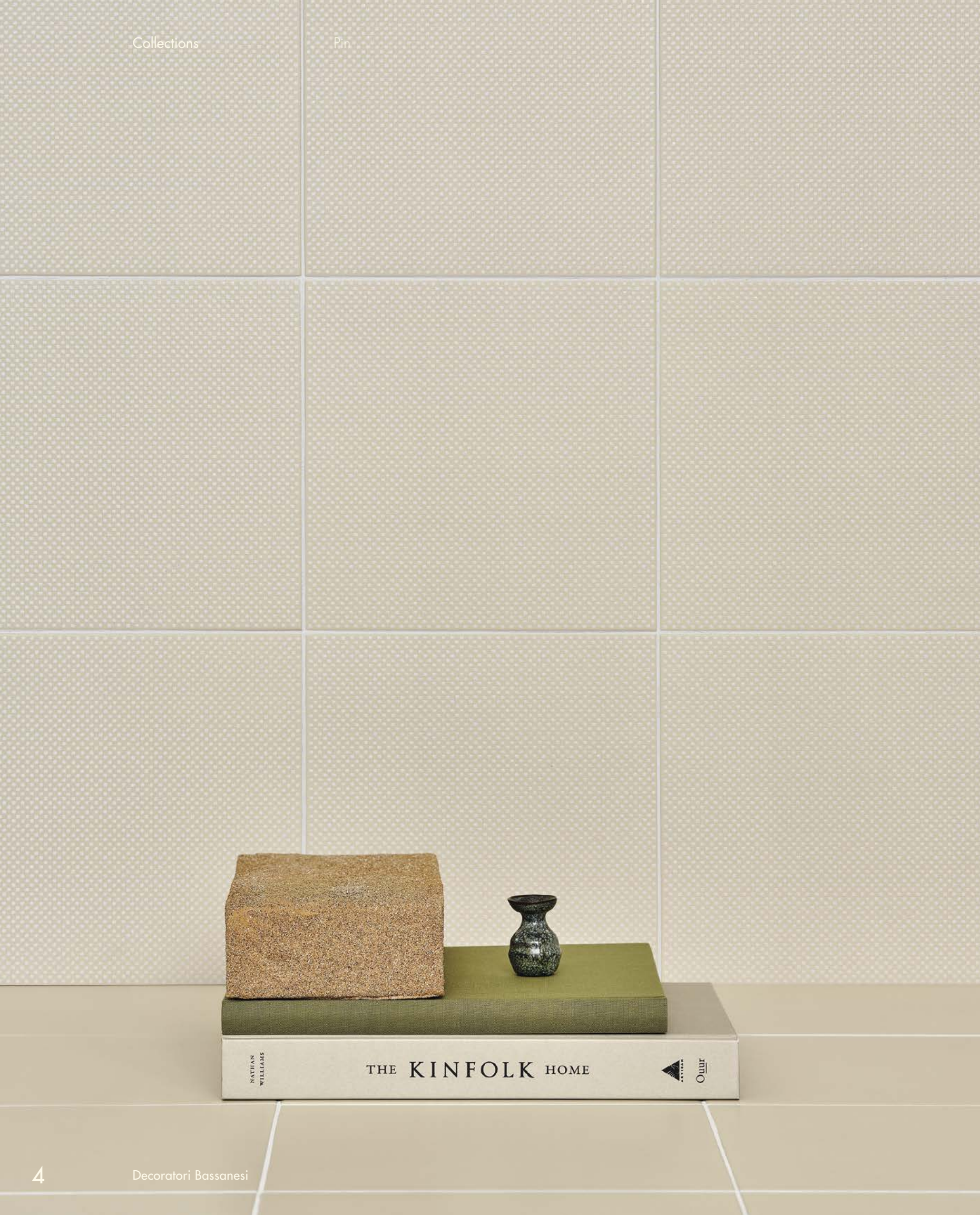
Margherita Rui

Design Collection



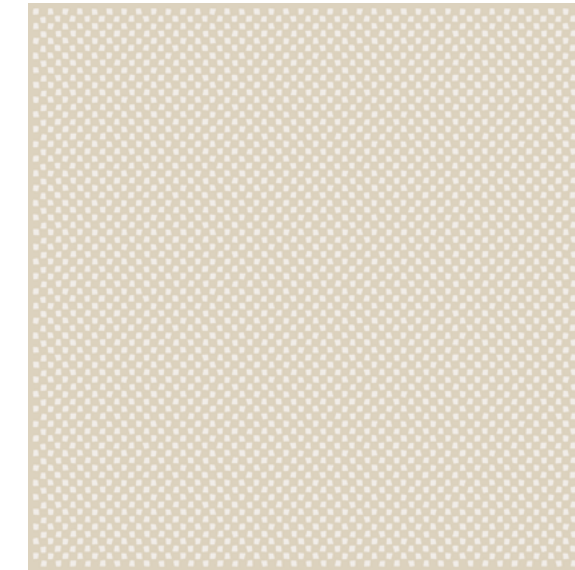
DECORATORI®  
BASSANESI

DECORATORI®  
BASSANESI  
ITALIA ■ 1988



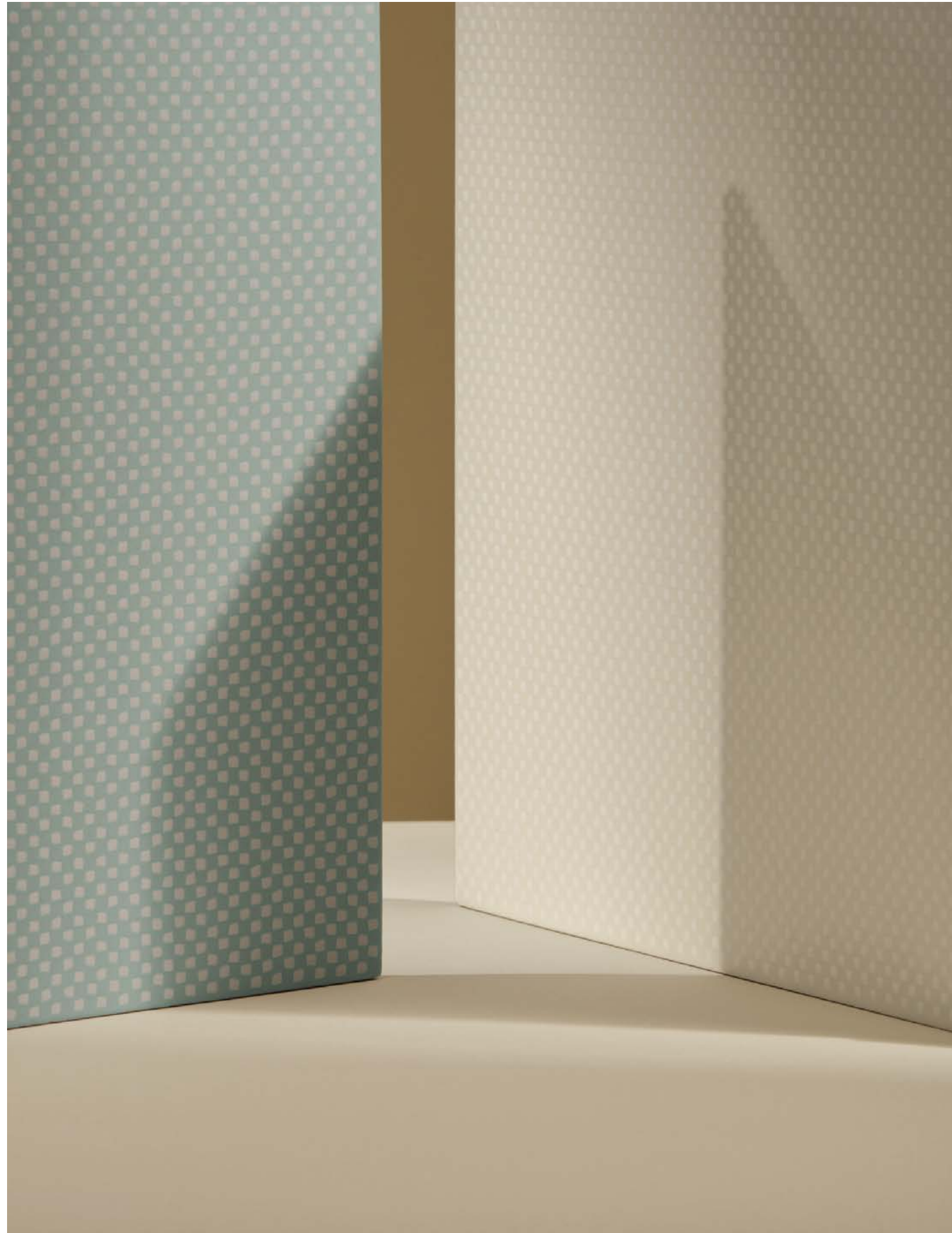
Collection **Pin**

Designer *Margherita Rui*



IT Pin è la nuova collezione ispirata al mondo tessile disegnata da Margherita Rui per Decoratori Bassanesi. Il nome deriva da pincheck, il noto pattern "a quadretto" fine realizzato con filati di diverso colore. Il motivo viene reinterpretato in chiave grafica a creare una vera e propria trama fatta di tratti e gesti imperfetti.

EN Pin is the new collection inspired by the textile world designed by Margherita Rui for Decoratori Bassanesi. The name comes from pincheck, the well-known fine "chequered" pattern created with different coloured yarns. The motif is graphically reinterpreted to create a true weave consisting of imperfect strokes and movements.

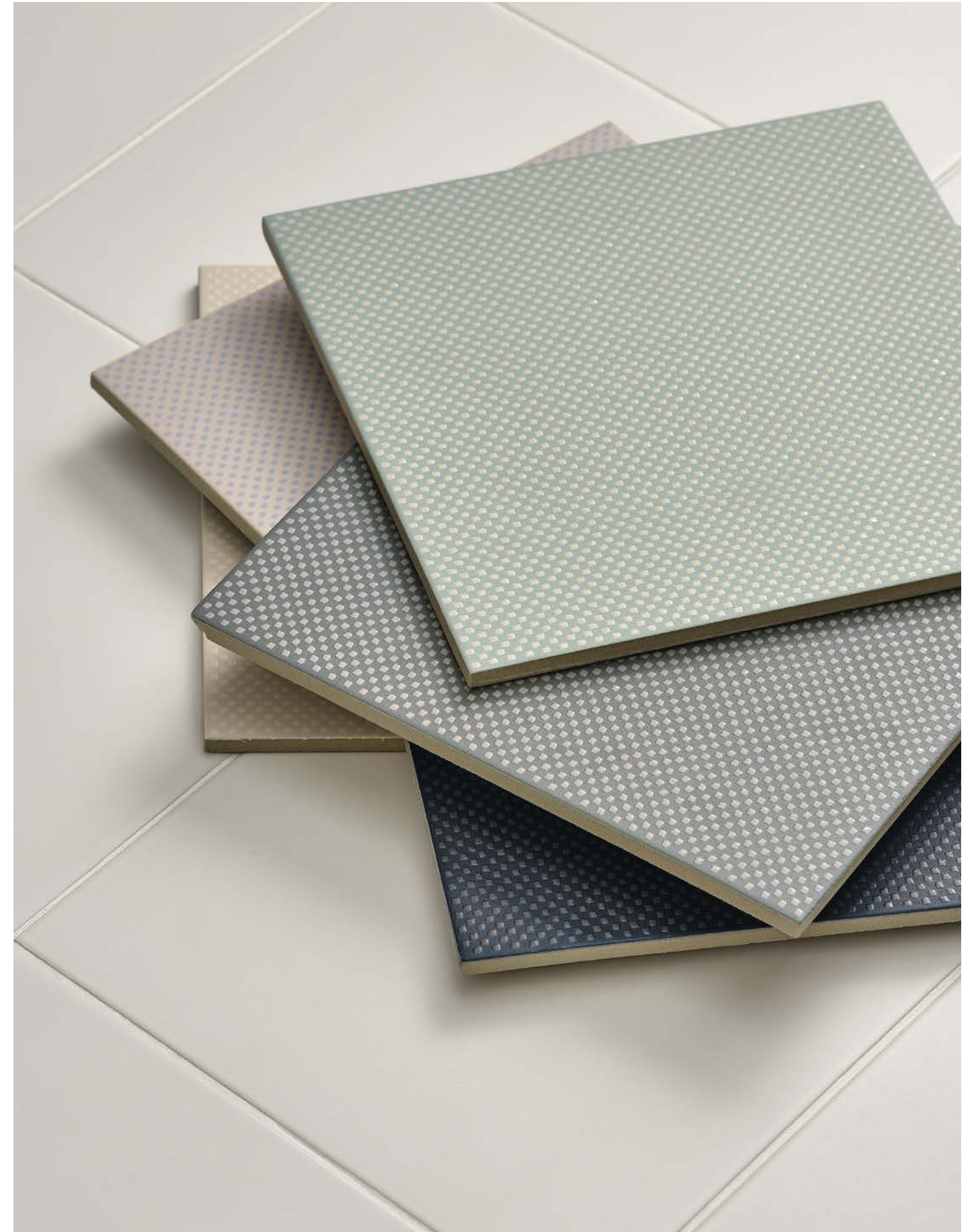
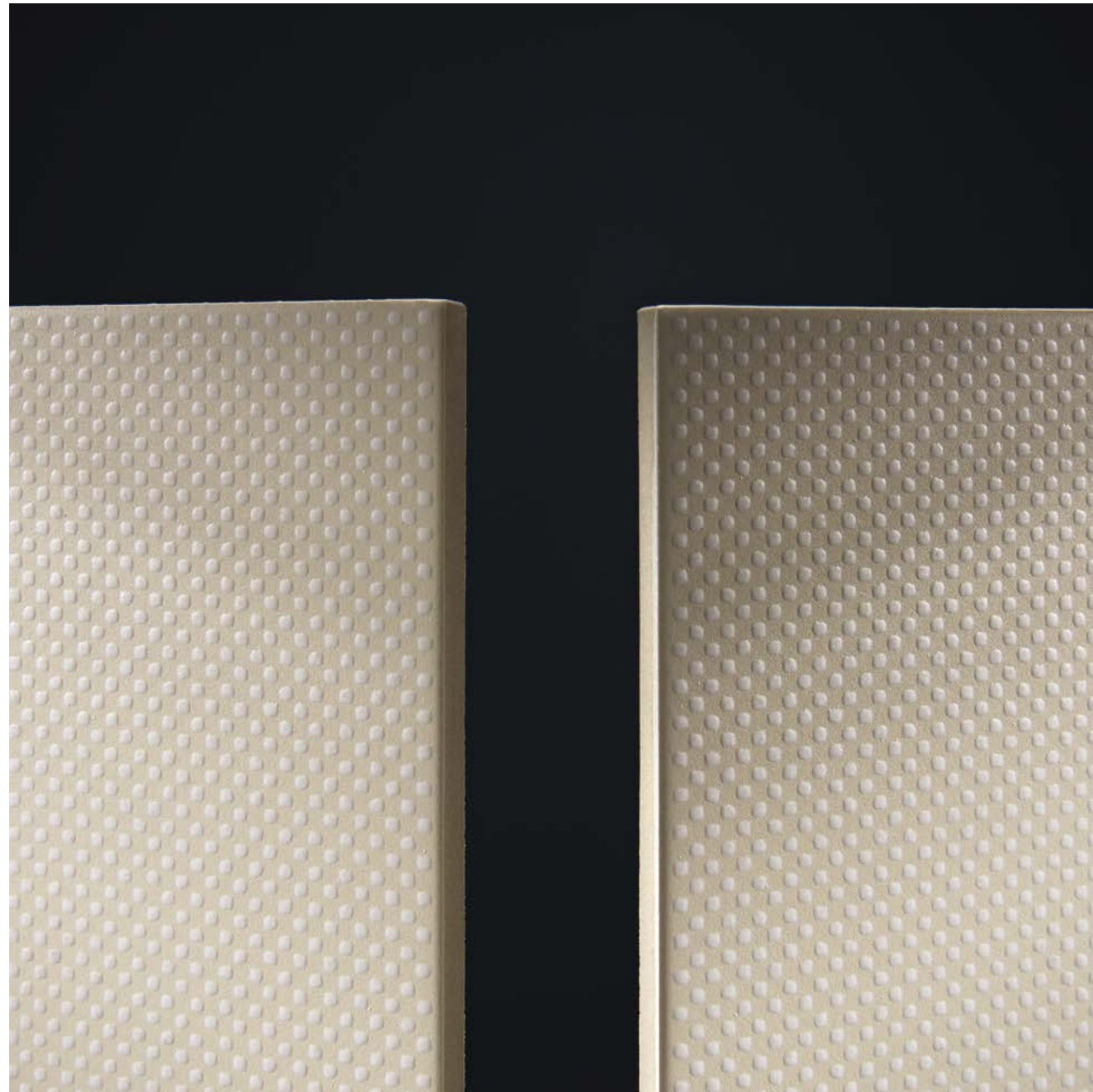


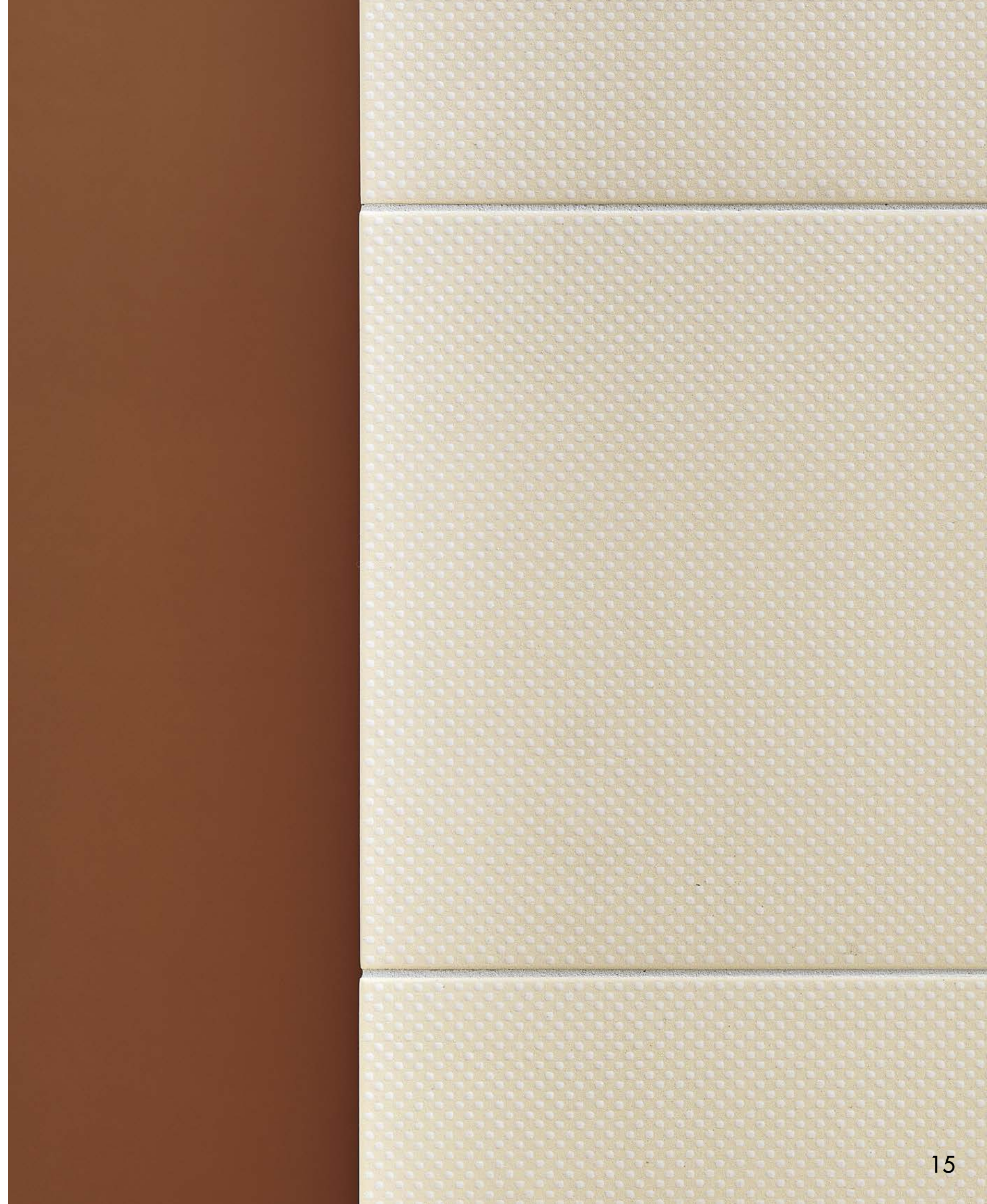


IT Pin è realizzata in gres porcellanato smaltato in formato 23,25x23,25 cm ed è pensata per essere abbinata alle basi, in 12 colori diversi, della gamma Colours. Vivace e colorata la collezione gioca sulla percezione; ai 6 fondi infatti vengono sovrapposti decori in altrettanti colori.

EN Pin is made of glazed porcelain stoneware in the 23.25x23.25 cm size and is designed to be combined with the bases, in 12 different colours, from the Colours range. Lively and colourful, the collection plays on perception; the 6 backgrounds are in fact superimposed on decorations in as many colours.





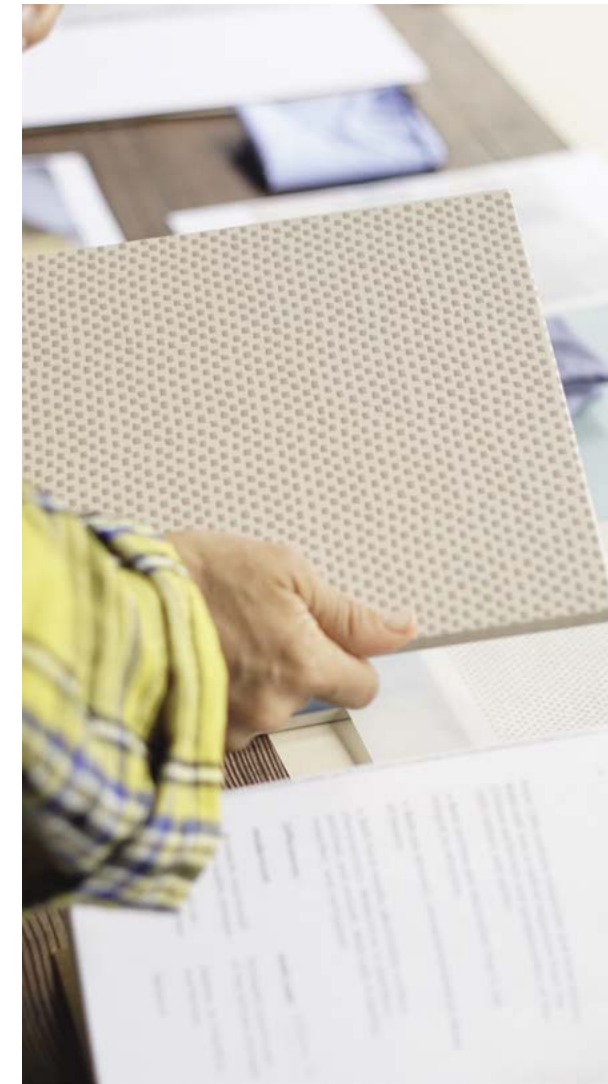


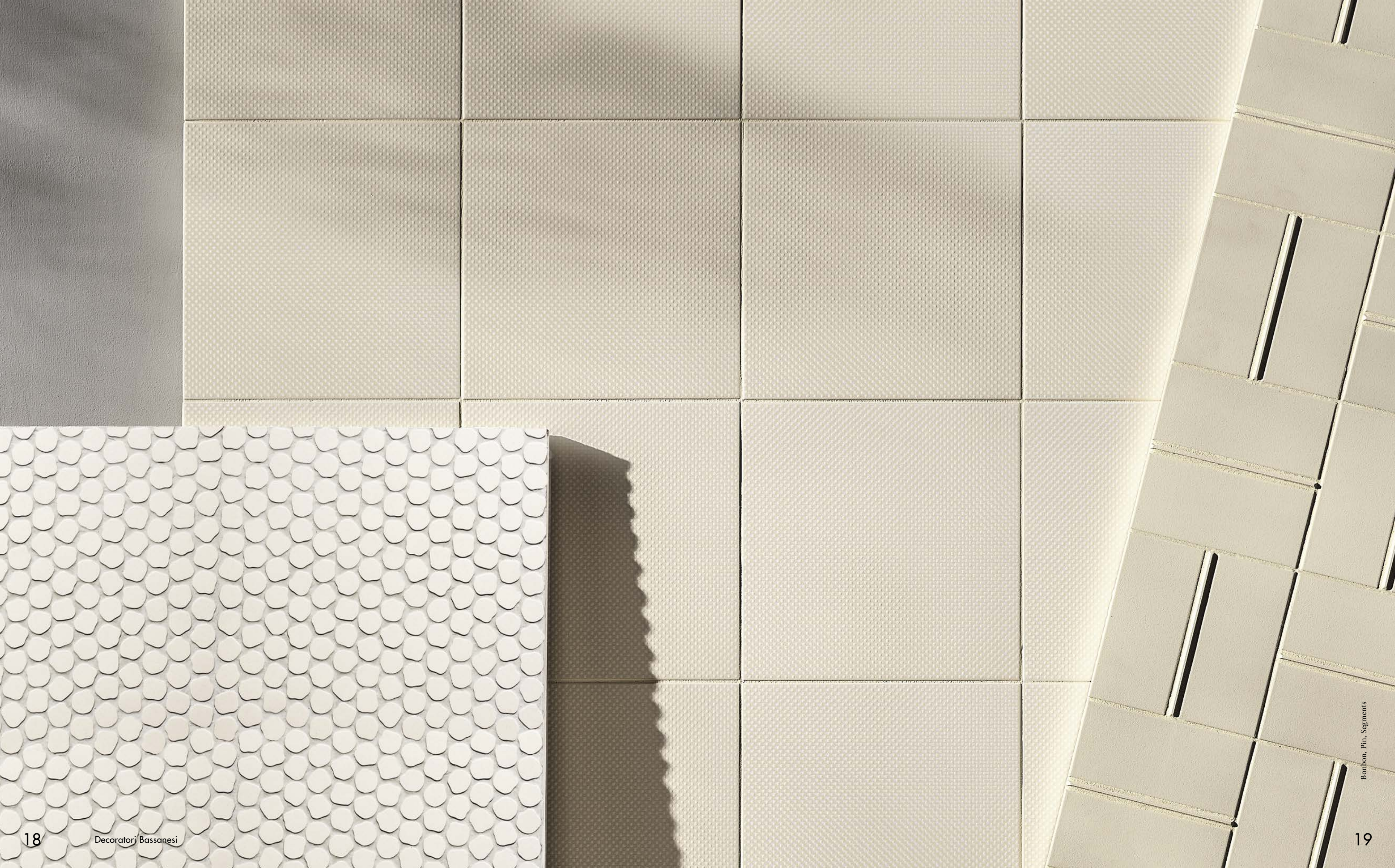
## Margherita Rui



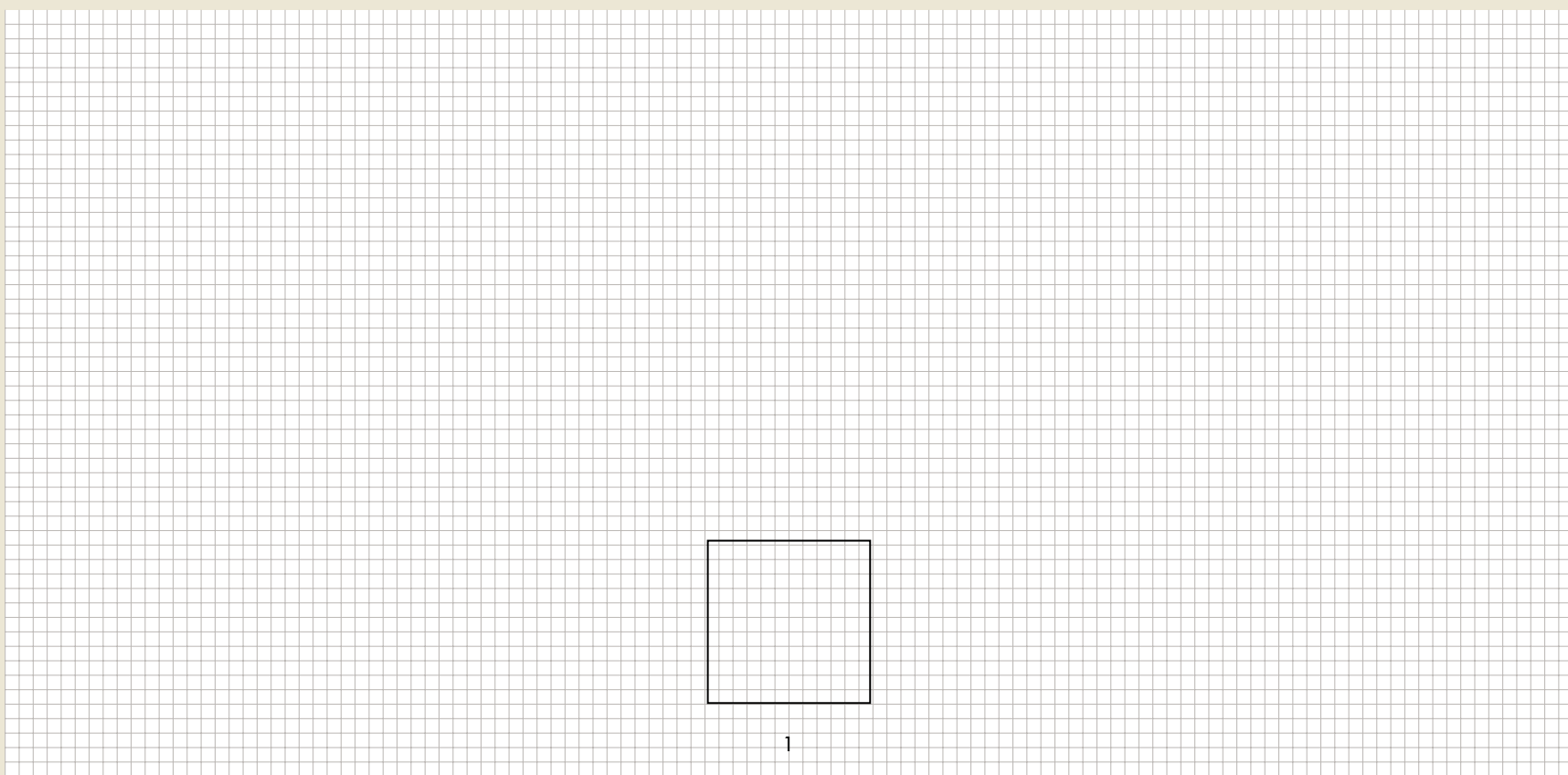
IT Designer e direttore creativo di diversi brand italiani di interior. Dopo la formazione in Design al Politecnico di Milano e a Fabrica - centro di ricerca del gruppo Benetton - Margherita Rui diventa art director in HDG, coordinando un team di creativi tra Venezia, Milano e New York. Nel 2009 fonda con Alessandro Rado Dogtrot, studio di consulenza strategica e direzione creativa, realtà multidisciplinare che progetta negli ambiti della comunicazione e del design.

EN Designer and creative director of several Italian interior brands. After studying Design both at the Milano Politecnico and Fabrica - research center of the Benetton group - Margherita Rui becomes art director at HDG, coordinating a team of creatives from Venice, Milan and New York. In 2009 she founds Dogtrot with Alessandro Rado, a strategic consulting firm and creative direction, a multidisciplinary company that works in the fields of communication and design.







**Pin****Margherita Rui**

Dimensione	cm	inches	Size
Nominale	23,25 x 23,25	9,15" x 9,15"	Nominal
Reale	23,25 x 23,25	9,15" x 9,15"	Real

PIN ( 1 ) ■

Spessore	Thickness
8,5 MM	

Colori Colors



( A ) Royal Blue · ( B ) Marine Green · ( C ) Sand · ( D ) Light Grey · ( E ) Pink · ( F ) Beige

Lavorazione	Finishing
Gres porcellanato smaltato	Glazed porcelain stoneware

Nota Note  
Fuga minima consigliata 2 mm. Minimum recommended joint 2 mm.

Per un risultato ottimale raccomandiamo di posare le lastre orientando la grafica sempre nella stessa direzione.

For best results we recommend laying the slabs orienting always in the same direction.

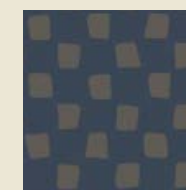
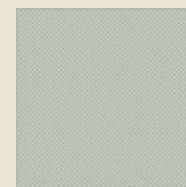
CLOSE UP

Match con: COLOURS

Match with: COLOURS



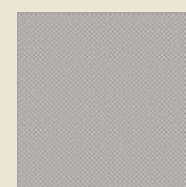
COD. DCPINRB

Pin  
Royal BlueFondo Royal Blue  
Pin IronColours  
Royal BlueColours  
Iron

COD.DCPINMG

Pin  
Marine GreenFondo Marine Green  
Pin BeigeColours  
Marine GreenColours  
Beige

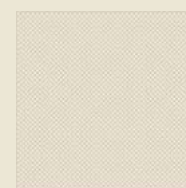
COD. DCPINSA

Pin  
SandFondo Sand  
Pin Marine GreenColours  
SandColours  
Marine Green

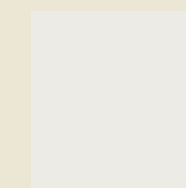
COD. DCPINLG

Pin  
Light GreyFondo Light Grey  
Pin PinkColours  
Light GreyColours  
Pink

COD. DCPINPI

Pin  
PinkFondo Pink  
Pin AzureColours  
PinkColours  
Azure

COD. DCPINBE

Pin  
BeigeFondo Beige  
Pin WhiteColours  
BeigeColours  
White

## Credits

**Art direction** Federica Biasi

**Graphic design** Giulia Ferraris

**Photography** Matteo Imbriani, Stefania Zanetti with Matteo Bellomo, Studio Biasi

**Text** Clarissa Biasi

**Photo previews catalogue** 17 - Dogtrot Concept Image

**3D visualizations** Operavisual

**Print** Grafiche Antiga

**Special thanks to** Gervasoni, Davide Groppi, Nicole Giavaldi, Emanuela Dassisi

Decoratori Bassanesi srl

Sede legale:

Largo Perlasca, 19 | 36061  
Bassano del Grappa (VI)

Uffici e depositi:

via Vallina Orticella, 48 | 31030  
Borso del Grappa (TV)

+39 0423 910076

info@decoratoribassanesi.it  
decoratoribassanesi.it